

Modular Home Plans



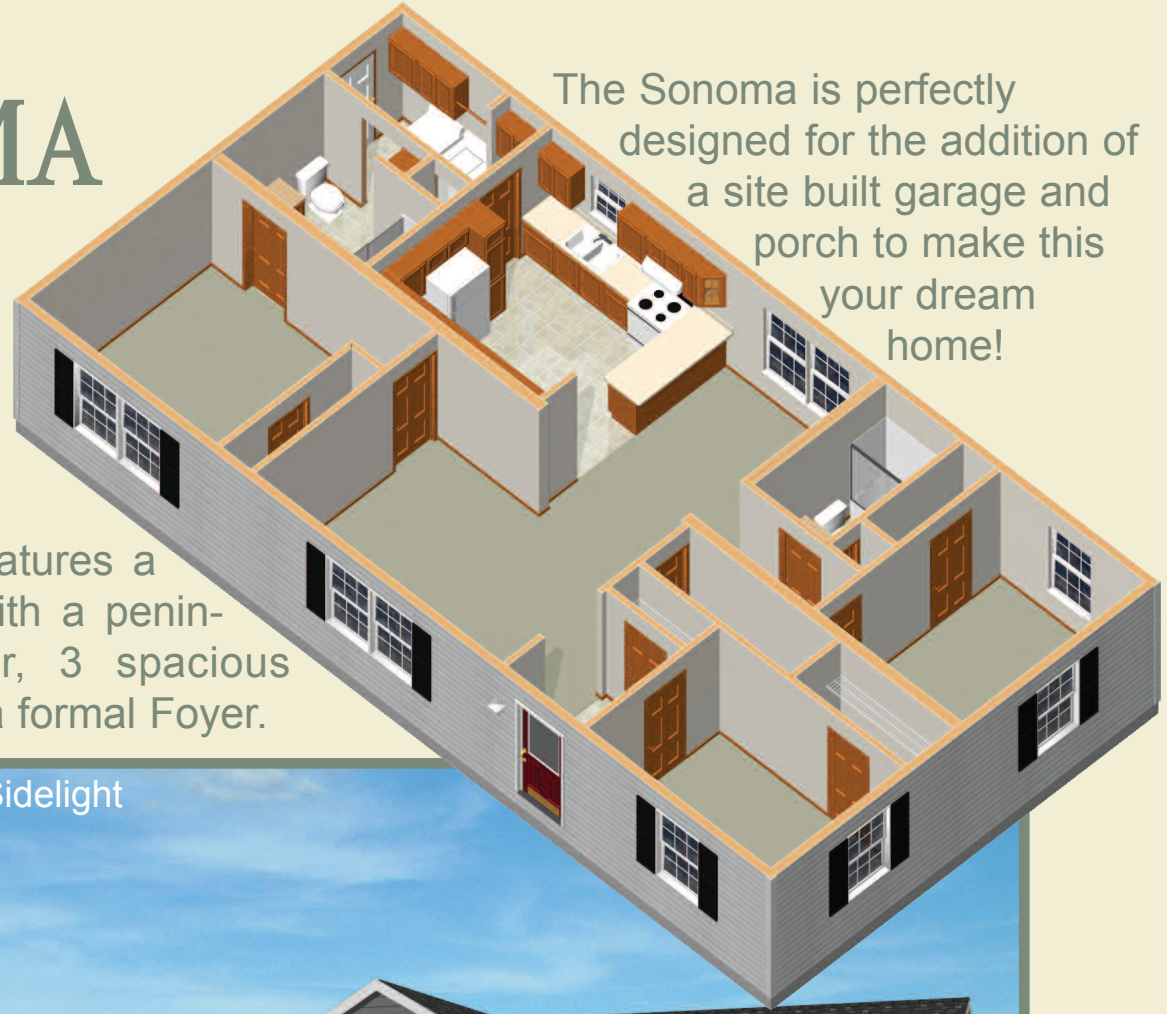
Shamrock
Homes

Quality Built Custom Homes since 1969

SONOMA

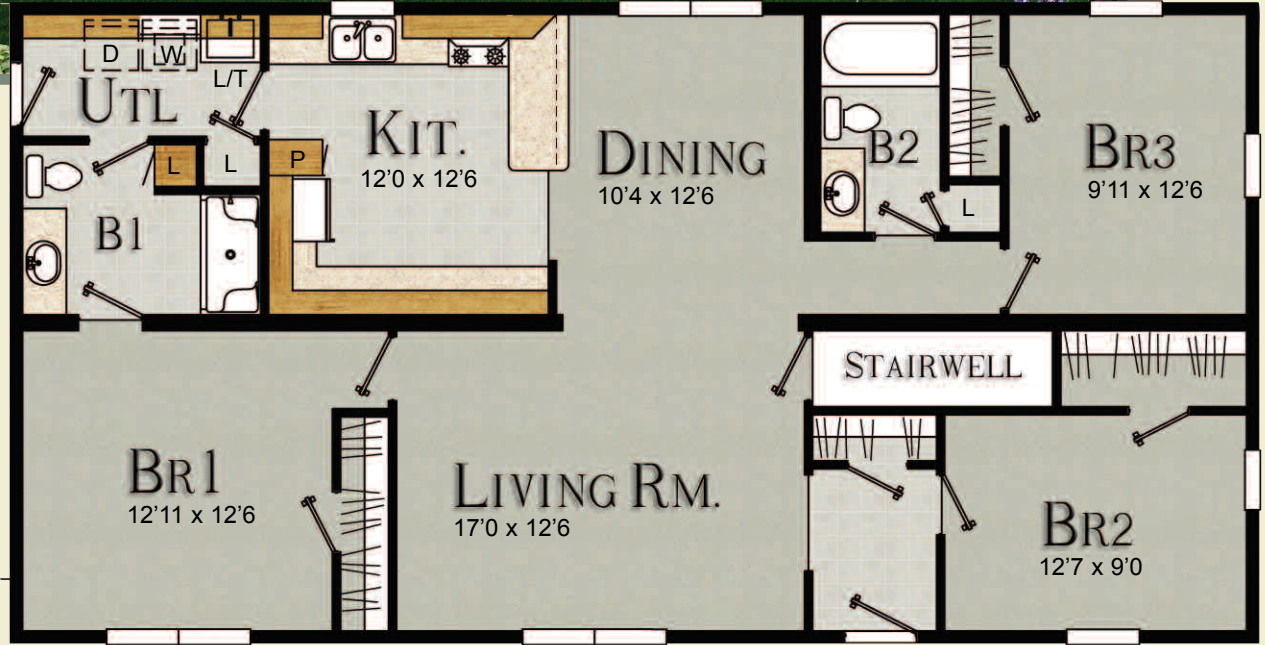
26'8" x 52'
 3 Bedroom
 2 Bath
 1386 Sq. Ft.

The Sonoma is perfectly designed for the addition of a site built garage and porch to make this your dream home!



The Sonoma features a large Kitchen with a peninsula snack bar, 3 spacious Bedrooms and a formal Foyer.

Shown with Optional Sidelight



Every Shamrock home is built with top quality, name brand components.



EMERALD

26'8 x 56'

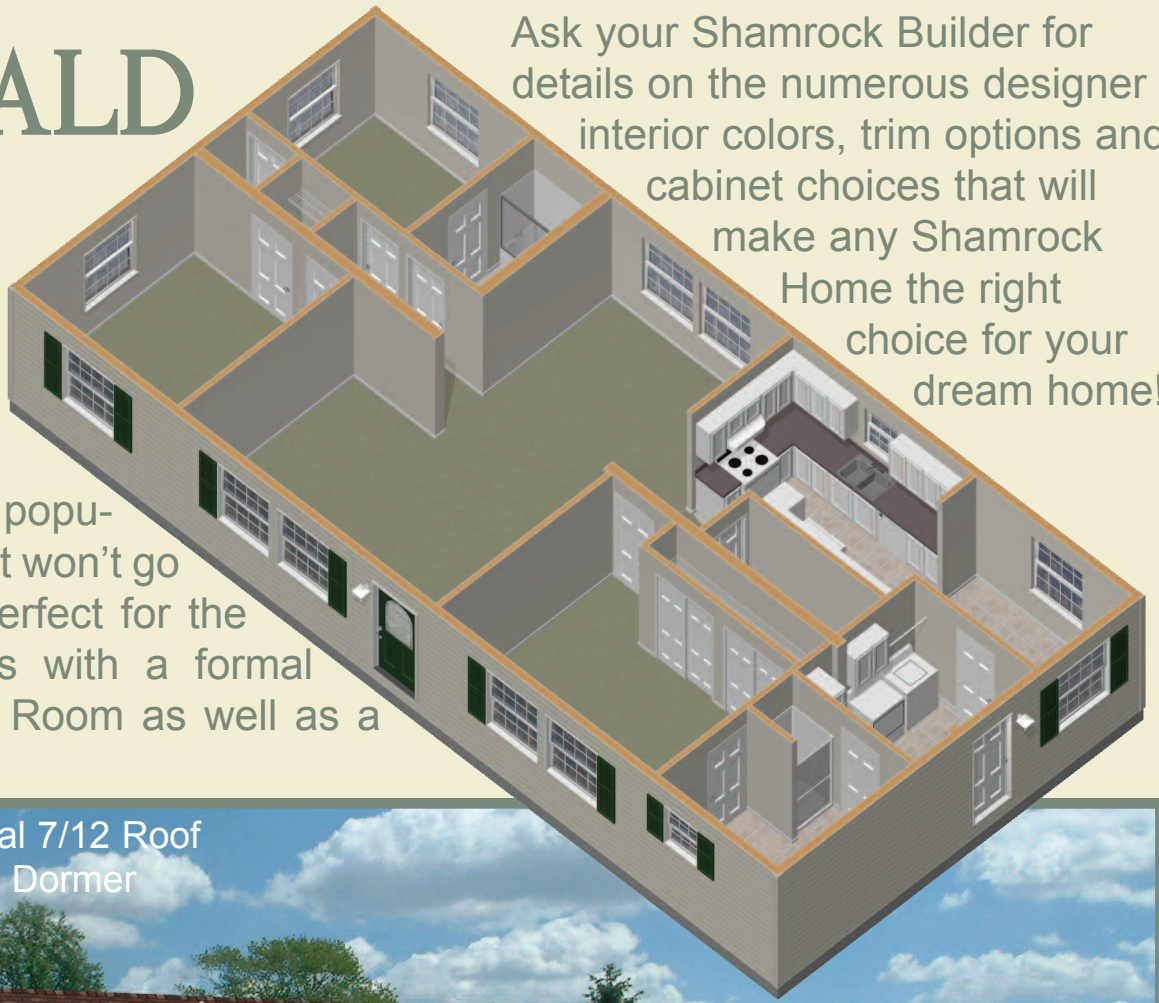
3 Bedroom

2 Bath

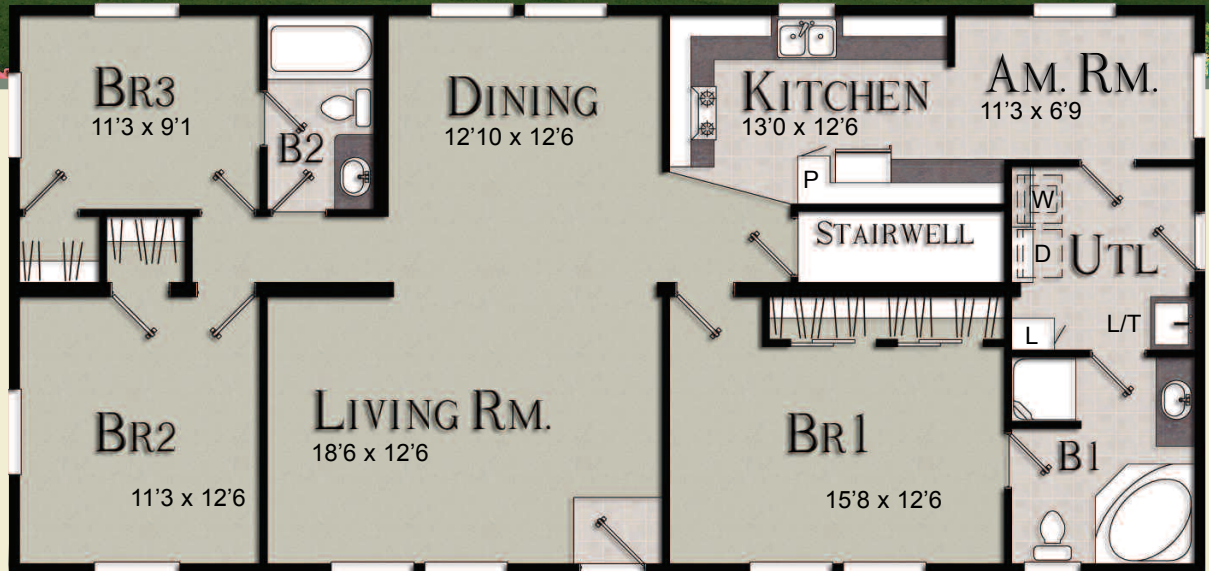
1493 Sq. Ft.

The Emerald is a popular plan design that won't go out of style. It's perfect for the family and friends with a formal Dining and Living Room as well as a Morning Room.

Ask your Shamrock Builder for details on the numerous designer interior colors, trim options and cabinet choices that will make any Shamrock Home the right choice for your dream home!



Shown with Optional 7/12 Roof Pitch and Site Built Dormer



You can count on Shamrock Homes for Quality, Value and Great Design!





Shamrock has been building quality custom homes since 1969!

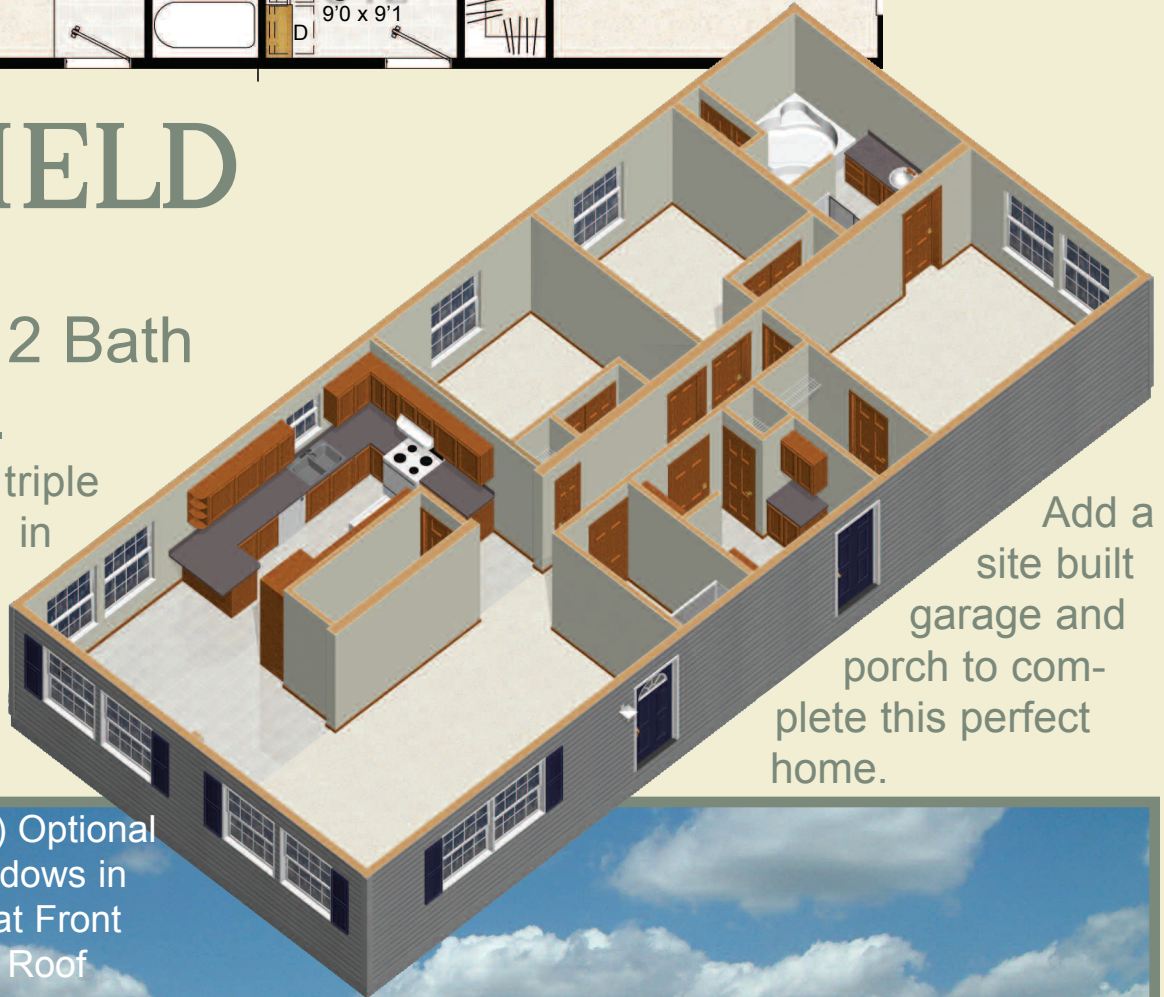
FAIRFIELD

26'8 x 58'8

3 Bedroom, 2 Bath

1564 Sq. Ft.

Add the optional triple circle-top windows in the Living Room as well as sidelite front door for an exceptional front elevation.



Add a site built garage and porch to complete this perfect home.

Shown with (3) Optional Circle Top Windows in L/R, Sidelite at Front Door and 7/12 Roof





Shown with Optional 7/12 Roof

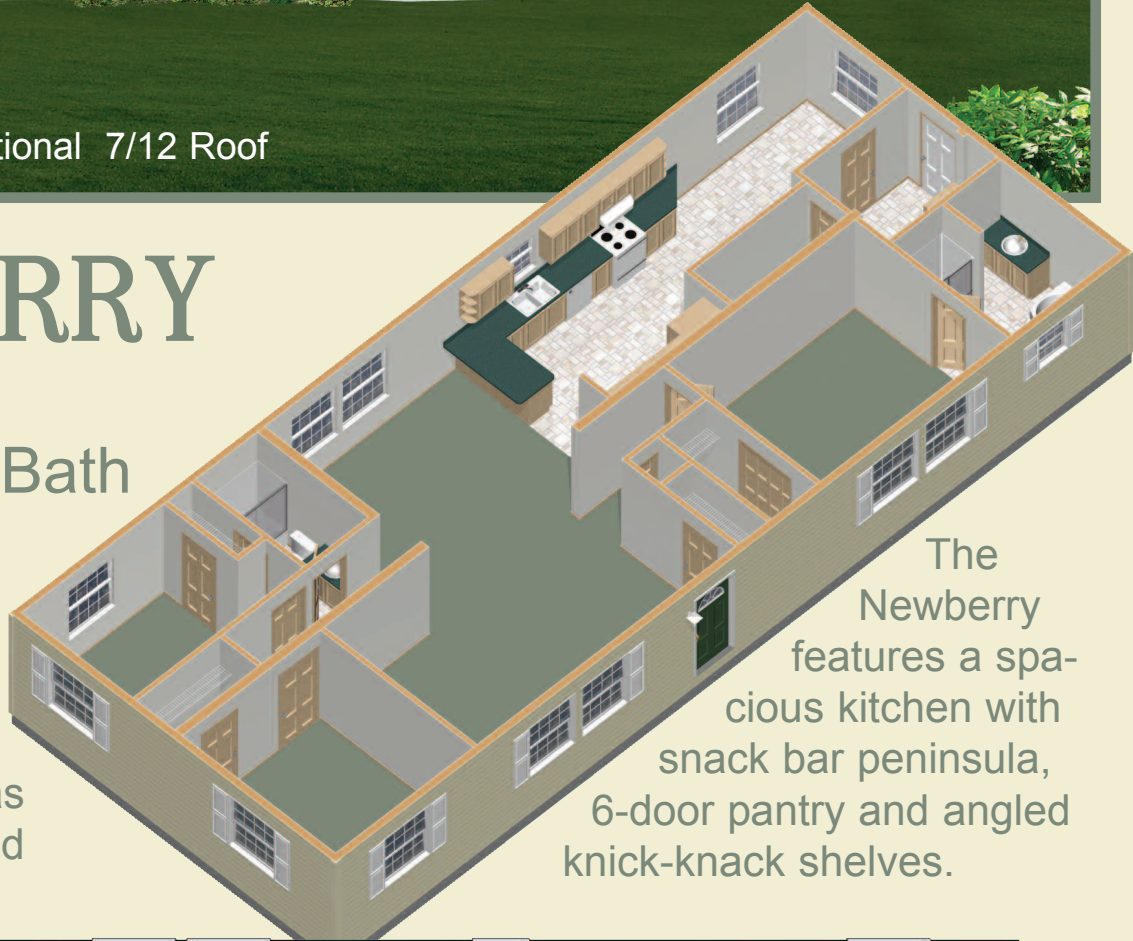
NEWBERRY

26'8 x 65'4

3 Bedroom, 2 Bath

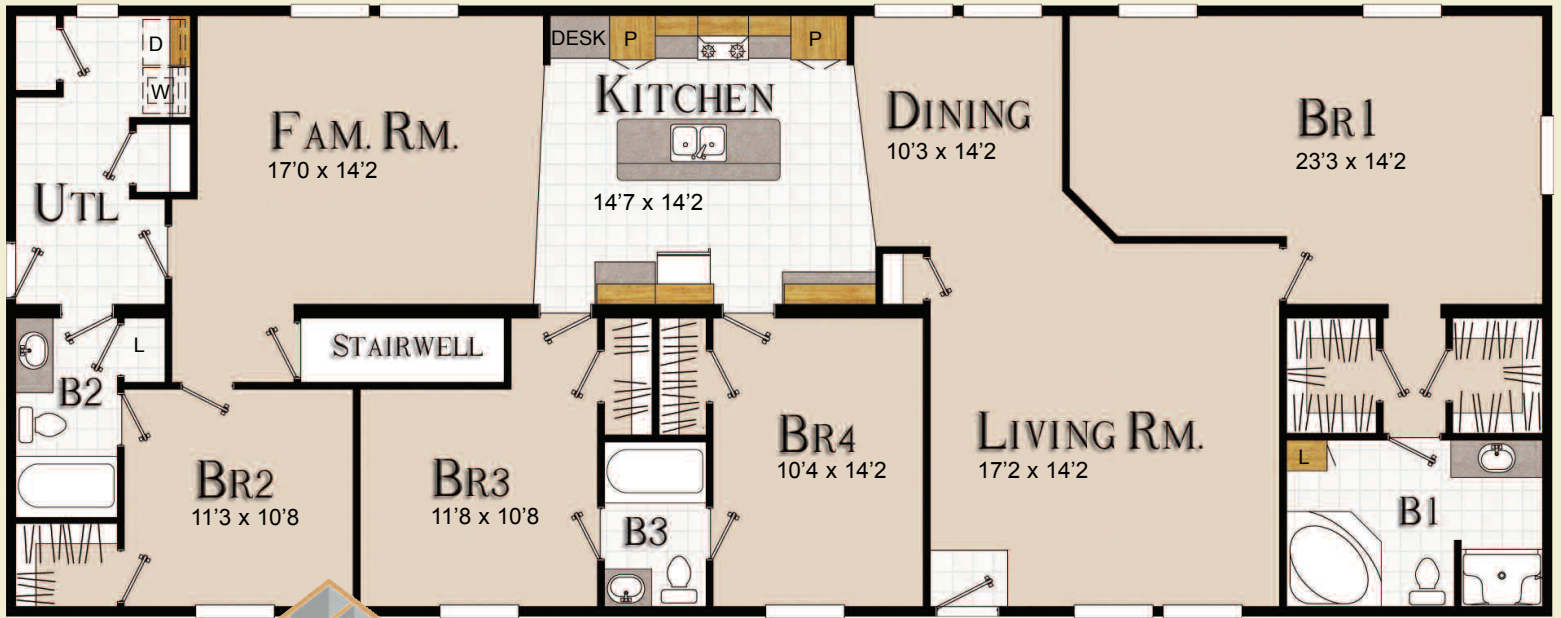
1742 Sq. Ft.

Your new Shamrock Home will easily accommodate site built amenities such as porches, dormers and garages.



The Newberry features a spacious kitchen with snack bar peninsula, 6-door pantry and angled knick-knack shelves.





Shamrock Homes offers a wide range of home styles.

MACDADDY

30'0 x 76'0

4 Bedroom, 3 Bath

2280 Sq. Ft.

The MacDaddy is a perfect home for a large or growing family. You'll appreciate the plentiful storage of double pantries in the Kitchen.

The optional picture window in the Living Room adds abundant natural light and an exciting front elevation.

Shown with Optional Picture Window. 7/12 Roof Pitch Shown





Shown with (3) Living Room Windows with Transoms Above.
Optional 7/12 Roof Shown

FORTRESS

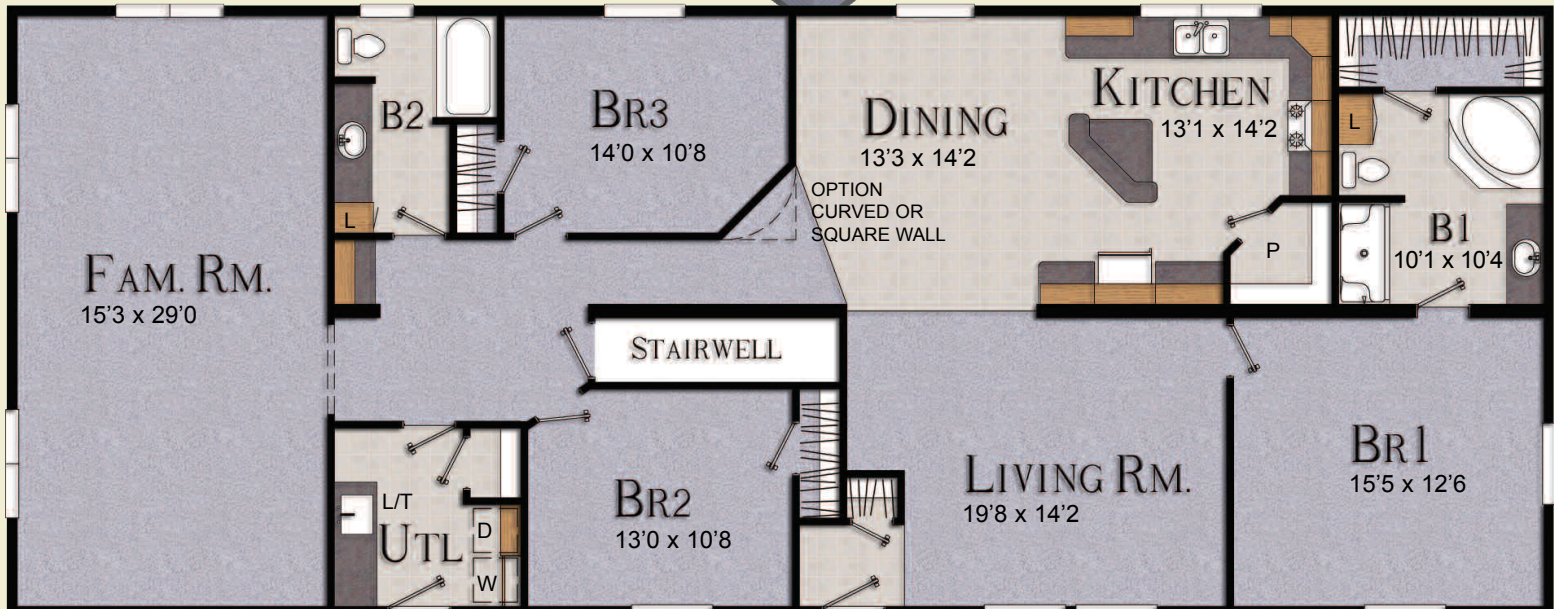
30'0 x 76'0

3 Bedroom, 2 Bath
2280 Sq. Ft.

Imagine the possibilities in the expansive Family Room; add a pool table or home theater for years of family fun.



The Fortress features a snack bar island Kitchen with a huge walk-in pantry.



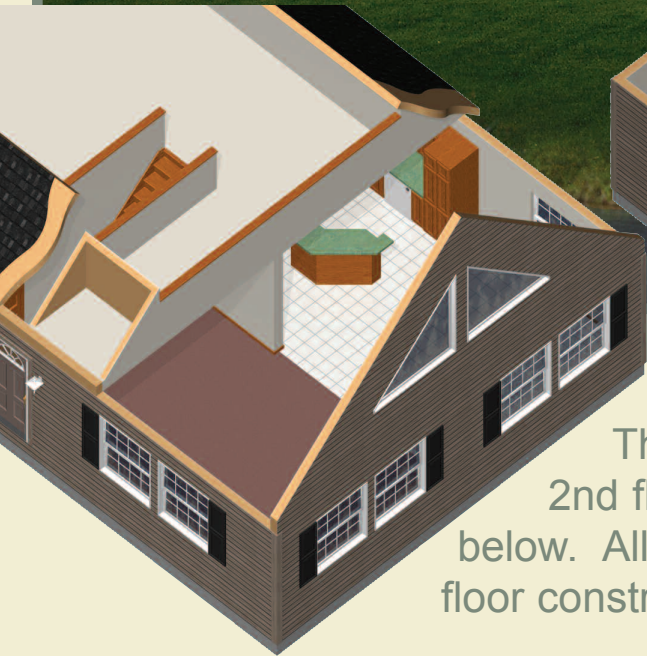
Shamrock Homes carefully selects its independent homebuilders to provide their expertise in every phase of your home construction process.





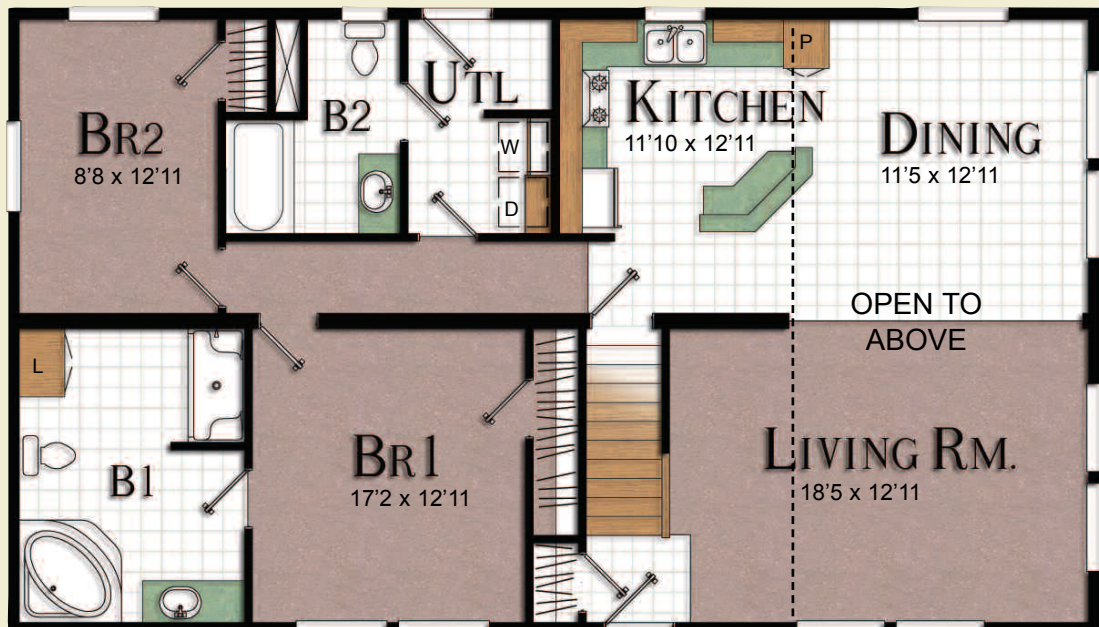
LAKEVIEW CAPE CHALET

27'6" x 48'0"
2 Bedroom,
2 Bath
1320 Sq. Ft.



The Chalet's
2nd floor is open to
below. All Cape Cod second
floor construction is done on site

A Shamrock Cape Chalet style home, like the Lakeview, is a popular design that offers plenty of natural light and excellent views from the living area through the dramatic windows as shown above. Consider adding optional patio doors in the Living and Dining Room to fit your active lifestyle



PINEWOOD

CAPE COD

27'6" x 52'

2 Bedroom

2 Bath

1430 Sq. Ft.

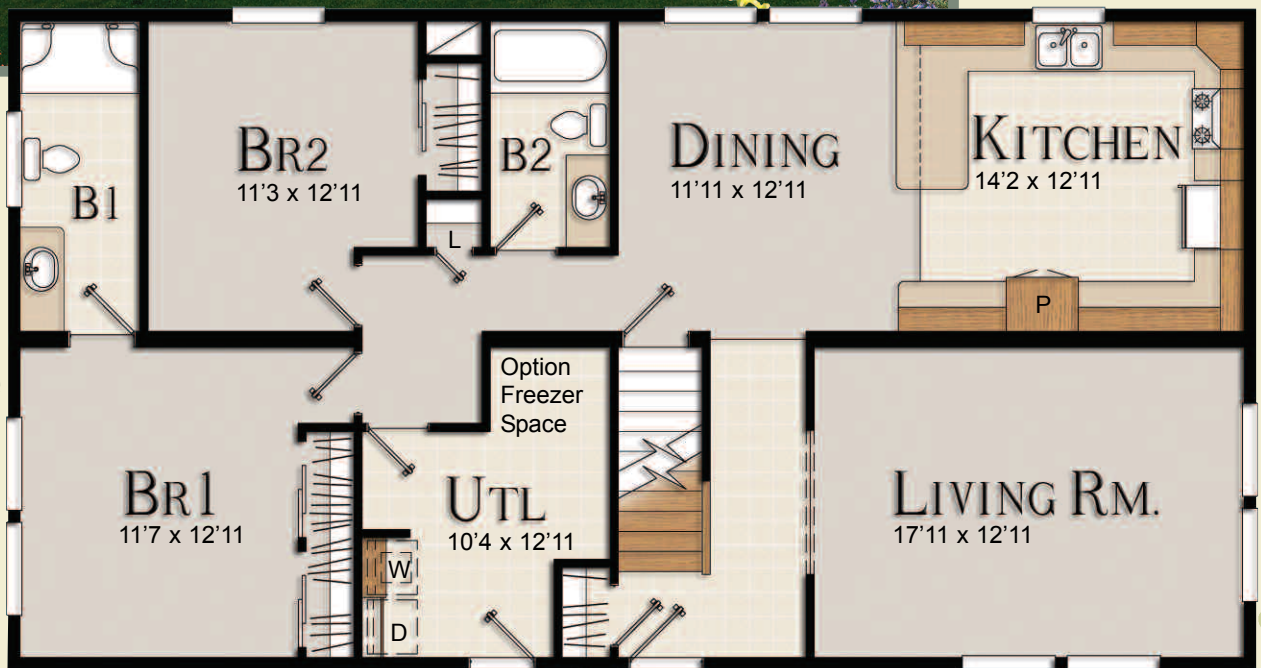
A modern Cape Cod Style home, the Pinewood looks great with the addition of a site built garage and porch!



Shown with Optional Sidelights and Site Built Window Dormer



Check out the huge Kitchen; the handcrafted cabinets will provide your custom home with distinction and elegance.



Shamrock Homes has the expertise to create the perfect home just for you!

Shown with Site Built Window Dormers and Porch Dormer



The Carlston features a dramatic stairwell with a formal foyer in this traditional Cape Cod style home

CARLSTON CAPE COD

27'6" x 53'4"
2 Bedroom,
2 Bath
1467 Sq. Ft.

Approximately 940 square feet of living space is available on the second floor for site construction. Ask your builder about design options.



A Shamrock Homes' Cape Cod style home gives plenty of room for family and friends

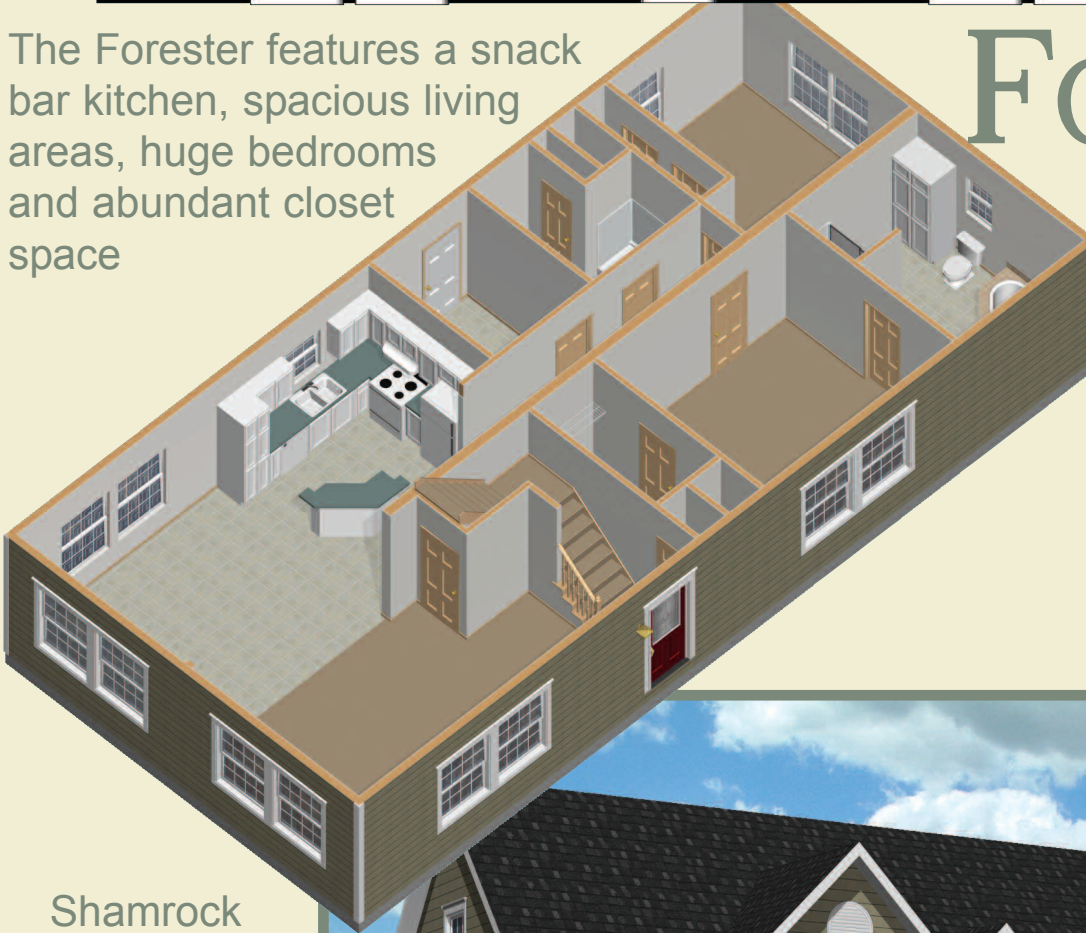




The Forester features a snack bar kitchen, spacious living areas, huge bedrooms and abundant closet space

FORESTER CAPE COD

27'6 x 57'4
2 Bedroom
2 Bath
1576 Sq. Ft.



Shamrock Homes has numerous trim, siding and window options to make the perfect home fit into any neighborhood.



Shown with Transoms above Windows and Optional Octagon Window

Shamrock Quality Starts With These Great Products!



BlueLinx Delivers Quality, Value & Reliability

When it comes to building products, BlueLinx is one of Shamrock's most valuable resources. BlueLinx provides the high performance, quality materials that sets your new home apart from all others.

From lumber to plywood panels, roofing to doors, BlueLinx delivers quality building products from the names you know and brands you trust. With more than 10,000 products from over 750 supplier companies, the BlueLinx nationwide distribution network gets the products you need where you need them, when you need them.



Kitchen and Bath Laminate Countertops

A beautiful kitchen and bath can be found in every Shamrock home, thanks to the innovative style of Wilsonart countertops.

Shamrock Homes offers a dazzling array of color and texture choices to give you the custom look that you want for your new home!



Interior Paint

You can count on Shamrock Homes and Benjamin Moore Paints to give your living spaces the durability and color choices that will be perfect for your

active, modern family. Benjamin Moore has been producing quality paint since 1883.



Fiberglass Insulation

With the rising energy costs today, it is vital that your new home has the finest insulation, guaranteeing maximum energy efficiency. Shamrock homes combines the quality of Owens Corning fiberglass insulation with the modern building techniques to create finest homes available for years of affordable living.



Heating and Air Conditioning

Step into the great indoors with Coleman central heating and air conditioning® systems.

Coleman systems have been developed and stringently tested to provide reliable comfort and outstanding economy. Units are designed for superior heat transfer to achieve top rated efficiency levels to help lower utility bills and conserve energy.



Carpet

Shaw is the world's largest carpet manufacturer, producing more than 600 million square yards of

floor covering each year. Choose from a variety of flooring styles with numerous color choices to give your home the custom look you desire. Shaw Carpets and Shamrock Homes is proud to bring color, texture, warmth, and comfort to peoples' lives.



The Heartland Vinyl Siding Advantage

A beautiful, maintenance-free exterior of your new Shamrock home begins with the quality of Heartland Vinyl Siding. Heartland's exclusive Super Polymer formulation fights fading, cracking and thermal expansion and contraction. The advanced technology of Heartland Super Polymer Siding begins with its formulation. A special selection of leading edge components and ingredients forms the basis for a siding that you can depend on, year after year. Every style of Heartland Vinyl Siding is artfully crafted to present the custom look of natural wood without the disadvantages.



Vinyl Windows

The all-vinyl construction of the Barrier windows

protects against rot, corrosion and condensation. Frames and sashes are fusion welded for exceptional strength. A combination of 7/8" insulated glass and a butyl Swiggle™ spacer system delivers great thermal performance that you will appreciate for years to come. These tilt sash windows make for easy cleaning and maintenance.

For more than 90 years, Atwood Mobile Products has designed and manufactured a wide variety of high quality products that serve the agricultural commercial, industrial, marine, mass transit, recreation vehicle, manufactured housing, van conversion and residential markets. The outstanding expertise gained from years of providing top quality products to the housing industry assures you that every Shamrock home is built to the high level of quality.



Vinyl Flooring

Since 1886 Congoleum has been a leader in the flooring industry and will continue to be a driving force in innovative

research and development for generations to come. As a pioneer in advanced manufacturing technology, Congoleum has never rested on its laurels, but instead, has always strived to bring the finest quality flooring products to your home. No other company has brought as many new and exciting flooring products to the marketplace since the dawn of the 21st Century. All Congoleum residential products are made in the USA utilizing state-of-the-art design and manufacturing equipment, and Congoleum is committed to developing even more flooring products now and in the future.



Kitchen and Bath Faucets

By selecting a faucet with an established brand name, you are selecting a faucet with a reputation for quality and

value. When you buy a faucet from Delta Faucet Company you can be confident you are getting the highest level of quality and technological advancement. With 50 years of heritage behind us, we are consistently on the cutting edge of new product innovation.

When you buy a Delta Faucet you can be confident you are getting the highest level of quality and technological advancement. With 50 years of heritage behind us, we are consistently on the cutting edge of new product innovation. Count on Shamrock Homes to build every home with quality brand-name components.

Shamrock Homes

1201 Markley Drive, Plymouth, IN 46563

Phone: 574-935-5111 Website: www.shamrock-modulars.com

Member of the National Association of Home Builders

Some options and site constructed features are shown on the exterior and isometric renderings. Please consult your builder for floor plan modification limitations and requirements